

Global Food Waste is a Pressing Concern - Metal Packaging Can Make a Difference



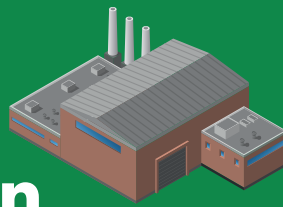
Decreasing food waste could significantly reduce the strain on land and other resources.



1.3 bn
metric tons of food is lost or wasted every year.



US \$680 bn
dollars lost on food waste in industrialized countries and **US \$310 billion** in developing countries.



3.3 bn
metric tons of CO₂ emitted due to global food waste - approximately four times the yearly CO₂ emissions of the global airline industry.

1 in 9
people do not have enough food to live a healthy life.



This impact will continue to grow as the population grows...

60%
increase food production in 2019 compared to 2005.



9 bn
people by 2050, 1.3 billion more than the world's current population.



METAL PACKAGING HAS A NATURAL ADVANTAGE OVER ALTERNATIVE FORMATS.

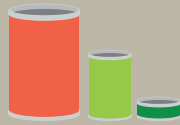
Combats Food Waste



Unbeatable barrier to oxygen, light and bacteria, that can help extend product shelf life and prevent premature spoilage.



Ability to be transported and stored at ambient temperatures helps feed people where food is scarce.



Variety of sizes helps individuals or families buy only what they need.



Makes Healthy Foods More Accessible



Canned produce is picked and packed within hours of harvesting, locking in freshness and nutrients. Fresh produce loses nutrients from when it's picked, during transportation and refrigeration, until it's eaten.



Ready-to-eat canned foods enable busy consumers to prepare nutritious meals quickly.



No preservatives needed thanks to a dependable seal to lock in freshness and support organic, healthy foods.

Supports Food Safety



High temperatures of retort cooking help sterilize canned food, giving metal packaging an unprecedented food safety record.

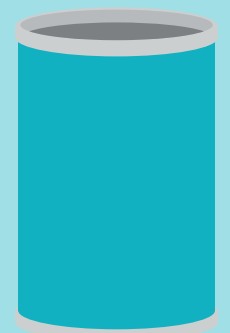


\$15.6 bn
Foodborne illness reportedly costs the US \$15.6 billion annually.



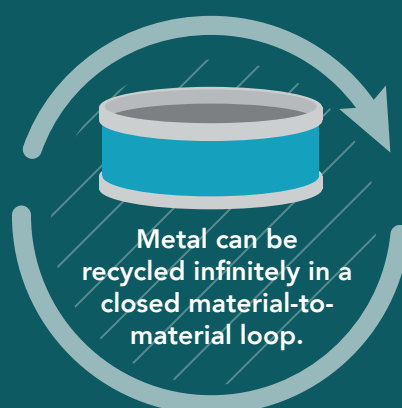
Tamper-proof and tamper-resistant features indicate when a package has been compromised.

Cans offer **100%**
contamination protection.

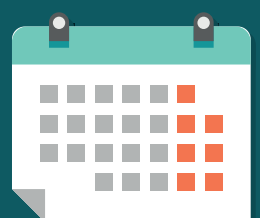


Champion of the Circular Economy

80%
of all metal produced is still available today.



Metal can be recycled infinitely in a closed material-to-material loop.



60

It takes as little as 60 days after recycling for a beverage can to end up back on store shelves as a new product.

To learn more, download our white paper "Food Waste: Turning a Challenge into an Opportunity"

